

5

SAFETY TIPS YOU NEED TO KNOW ABOUT FIRE RATED DOORS

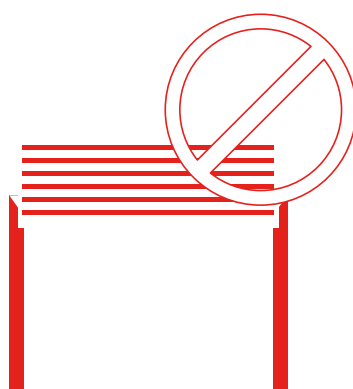


DO NOT LOCK EXIT FIRE DOORS

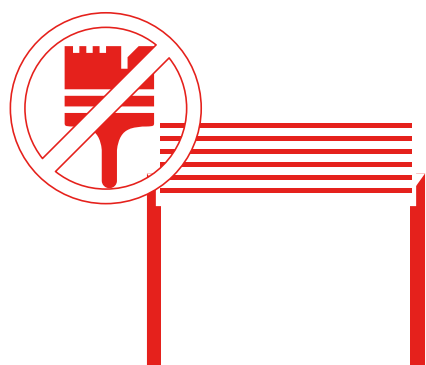
Don't lock or fasten fire exit doors in a way that could prevent them from being easily opened by a person who may use them during an emergency exit. Make sure these doors are easily openable from the inside of the building.

DO NOT BLOCK FIRE DOORS OR PROP THEM OPEN

Since fire doors are designed to automatically close when they reach a certain temperature, keeping them free of obstruction will ensure they don't descend onto misplaced objects. Obstructions could cause damage to the door and prevent it from working properly during an emergency.



When a fire door is unable to fully close, it can't create an effective barrier between rooms to deplete the fire's oxygen supply. This can fuel the fire and allow it to spread freely throughout your building.

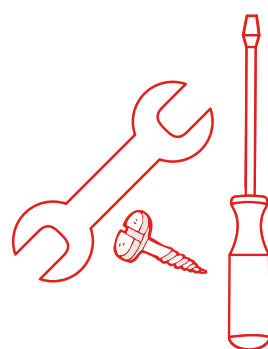


DO NOT MODIFY BEFORE CONSULTING A PROFESSIONAL

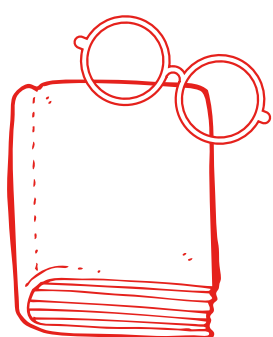
Many field modifications can interfere with the fire door, voiding compliance and causing it not to function as intended. Before modifying a fire door in any way, be sure to consult the door manufacturer or testing laboratory. These professionals can help guide you in making proper modifications without compromising the integrity of your fire rated door.

INSPECT, MAINTAIN AND TEST ROUTINELY

Performing routine visual and operational checks will ensure your door is working optimally at all times and help you catch damaged door assemblies before they turn into larger problems. Annual inspections and drop testing are just as important, as they're more extensive and can help you catch overlooked deficiencies. When you inspect, maintain and test your doors as recommended, you can preserve the integrity of your door's safety features and ensure it's ready for action at any time.



NFPA 80 requires that any repairs and defects that could interfere with the fire door's operation be repaired without delay, as well as the annual inspection and testing of fire door assemblies by individuals with knowledge and understanding of the operating components of fire doors.



EDUCATE OCCUPANTS

The above tips are each imperative to the effectiveness of your fire door's operation. Educate all occupants on the importance of closing a fire door. After all, if one person doesn't follow a safety step, it can jeopardize the entire building and the safety of its occupants. By educating your building occupants, you can ensure your doors readiness in the event of a fire.



ASTAAMERICA
BY JANUS INTERNATIONAL

[CLICK HERE TO LEARN MORE](#)

For more information on our full-line, visit:
www.ASTAAmerica.com