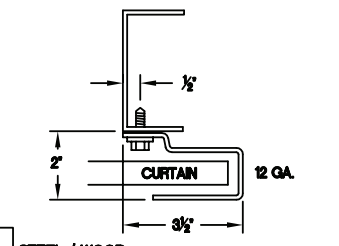
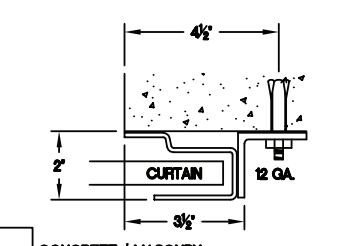


**GUIDE DETAIL (NON-WINDLOCK)**



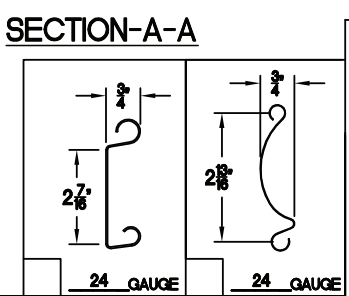
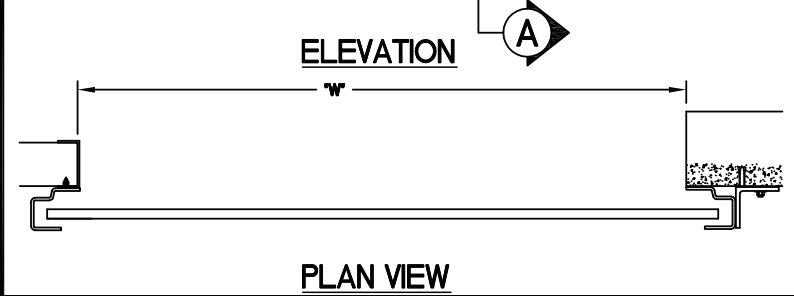
STEEL / WOOD



CONCRETE / MASONRY

SIDEROOM REQUIREMENTS (CHOOSE TYPE OF OPERATION)				HEADROOM REQUIREMENTS (SEE ELEVATION)		
	ROPE PULL	CHAIN HOIST	MOTOR OPERATION	HEIGHT	"X"	"V"
•A-1	6'	10'	9'	UP TO 8'-0"	20"	20"
•A-2	6'	6'	6'	UP TO 10'-0"	21"	21"
				OVER 10'-0"	23"	23"

• NOTE: ALL DOORS GREATER THAN OR EQUAL TO 14' WIDE A-1 AND A-2 - 7' MINIMUM  
 • NOTE: UPGRADE TO STRUCTURAL STEEL GUIDES A-1 AND A-2 - 7' MINIMUM  
 • NOTE: ALL DIMENSIONS ON CHART BASED ON INSIDE FACING OUT



**GENERAL NOTES**

**SLATS/HOOD: SELECT FINISH OPTION BELOW:**

- GALVANIZED ONLY
- GRAY POLYESTER TOP COAT
- WHITE POLYESTER TOP COAT

**OTHER SURFACES:**

- SHOP COAT BLACK PRIMER

**OPERATION:**

- RIGHT HAND SHOWN, LEFT HAND OPPOSITE

MRK.	QTY.	OPENING SIZE		OPERATION	R.H.	OPTION	PROJECT:	ARCHITECT:	CONTRACTOR:	DISTRIBUTOR:	DATE:	SHEET:	OF:	BY:	REF.#
		WIDTH "W"	HEIGHT "H"												
<b>MODEL 324-COMMERCIAL SLAT DOOR (COMMERCIAL OPERATOR)</b>															

Asta Door Corporation is not responsible for the use of improper installation procedures, structural supports as well as field inspection prior to manufacturing and installation.

APPROVAL SIGNATURE: \_\_\_\_\_ DATE: \_\_\_\_\_



4255 McEver Industrial Dr.  
 Acworth, GA 30101  
 Ph: (770) 974-2600  
 Fax: (770) 974-1455  
 www.astadoor.com