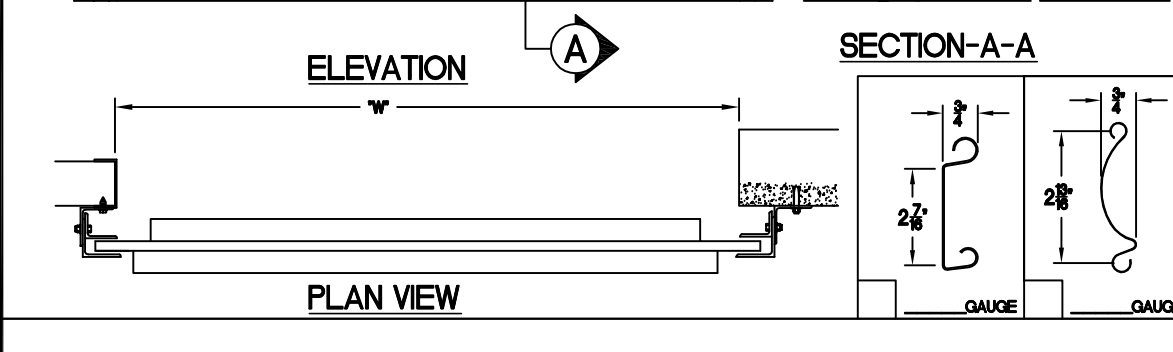


SIDEROOM REQUIREMENTS (CHOOSE TYPE OF OPERATION)			HEADROOM REQUIREMENTS (SEE ELEVATION)			
	ROPE PULL	CHAIN HOIST	MOTOR OPERATION	HEIGHT	X'	V'
•A-1	6'	10'	9'	UP TO 8'-0"	20'	20'
•A-2	6'	6'	6'	UP TO 10'-0"	21'	21'
				OVER 10'-0"	23'	23'

• NOTE: ALL DOORS GREATER THAN OR EQUAL TO 14' WIDE A-1 AND A-2 = 7' MINIMUM
 • NOTE: UPGRADE TO STRUCTURAL STEEL GUIDES A-1 AND A-2 = 7' MINIMUM
 • NOTE: ALL DIMENSIONS ON CHART BASED ON INSIDE FACING OUT



GENERAL NOTES

SLATS/HOOD: SELECT FINISH OPTION BELOW:

- GALVANIZED ONLY
- GRAY POLYESTER TOP COAT
- WHITE POLYESTER TOP COAT

OTHER SURFACES:

- SHOP COAT BLACK PRIMER

OPERATION:

- RIGHT HAND SHOWN, LEFT HAND OPPOSITE

MRK.	QTY.	OPENING SIZE		OPERATION	RH.	OPTION	PROJECT:													
		WIDTH 'W'	HEIGHT 'H'				ARCHITECT:	CONTRACTOR:	DISTRIBUTOR:	DATE:	SHEET:	OF:	BY:	REF:#						
					LH.															
300 Series, Commercial Slat Door, Chain Hoist, Roll Formed Guides																				


ASTAAMERICA
 BY JANUS INTERNATIONAL
 4255 McEver Industrial Dr.
 Acworth, GA 30101
 PH:(770) 974-2800
 Fax:(770) 974-1455
 www.astadoor.com

Asta Door Corporation is not responsible for the use of improper installation procedures, structural supports as well as field inspection prior to manufacturing and installation.

APPROVAL SIGNATURE: _____ DATE: _____